

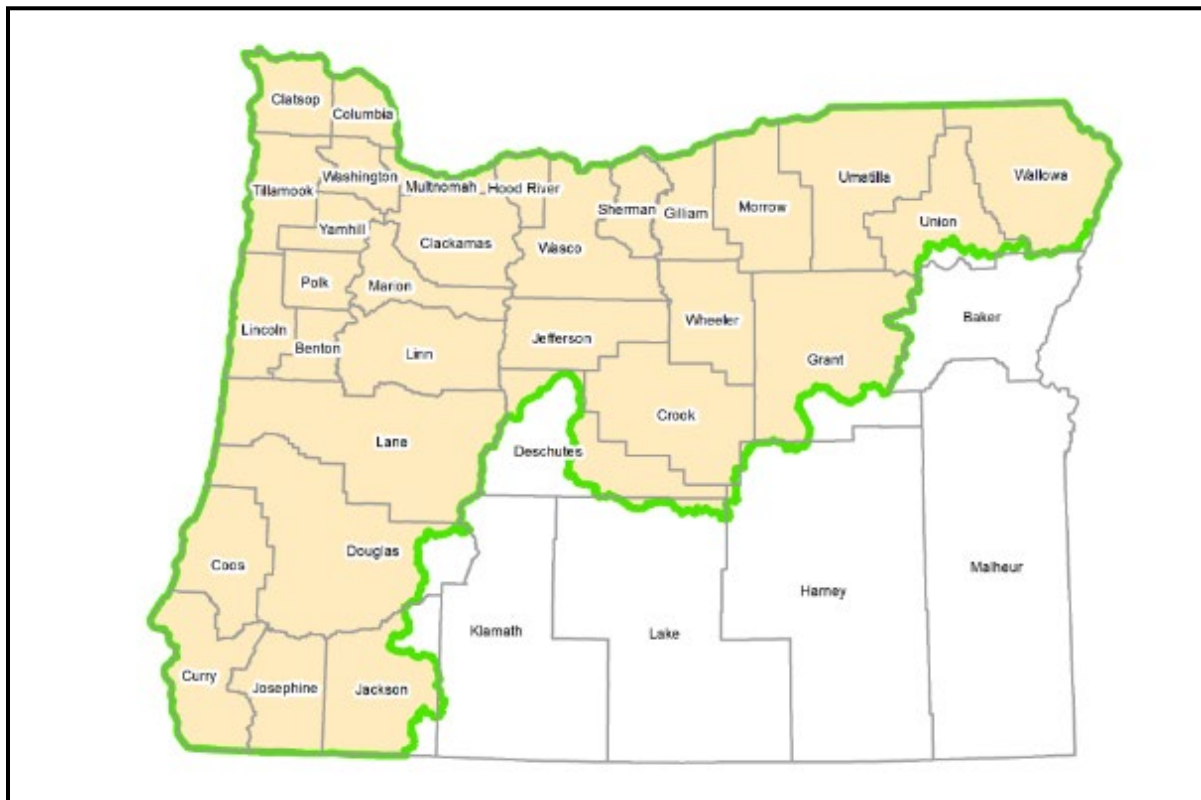
## Introduction

The Oregon National Flood Insurance Program (NFIP) Endangered Species Act (ESA) integration performance standards apply to communities that are 1) located in the Oregon plan area, 2) located within the mapped special flood hazard area (SFHA), and 3) within a community participating in the NFIP. This document provides instructions for determining if your location of interest is subject to the Oregon NFIP-ESA integration performance standards based on these three considerations. Applicability is not fixed in time. Updates to SFHA delineations or communities joining or withdrawing from the NFIP could result in changes in applicability for a specific location.

## Directions to Determine if a Location is in the Plan Area

The plan area for NFIP-ESA integration in Oregon includes the area encompassed by the green line on Figure 1. The plan area boundary is generally defined by the boundaries of six NMFS Salmon and Steelhead Recovery Domains within the State of Oregon: Oregon Coast, Southern Oregon/Northern California Coast, Willamette River, Lower Columbia River, Middle Columbia River, and Snake River.

Figure 1. Plan Area Boundary for NFIP-ESA Integration



NFIP-ESA Integration in Oregon  
Determining if a Location is Within the Plan Area  
July 2024

If the location you are interested in is close to the green line, you can use the directions below to determine if the specific location of interest is inside or outside of the plan area.

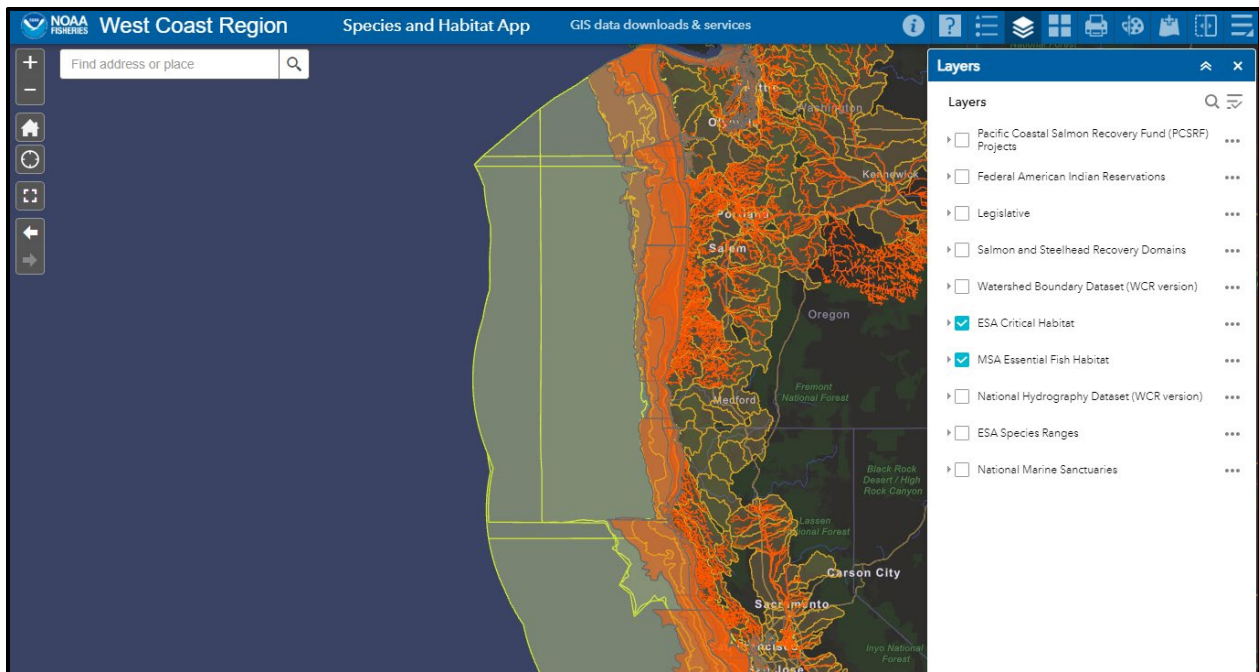
Step 1

Open [NOAA's Species and Habitat App](#), or you may need to copy and paste the following into your internet address bar:

<https://maps.fisheries.noaa.gov/portal/apps/webappviewer/index.html?id=e8311ceaa4354de290fb1c456cd86a7f>

Figure 2 shows a typical view of the site.

Figure 2. NOAA's Species and Habitat App Map



FEMA



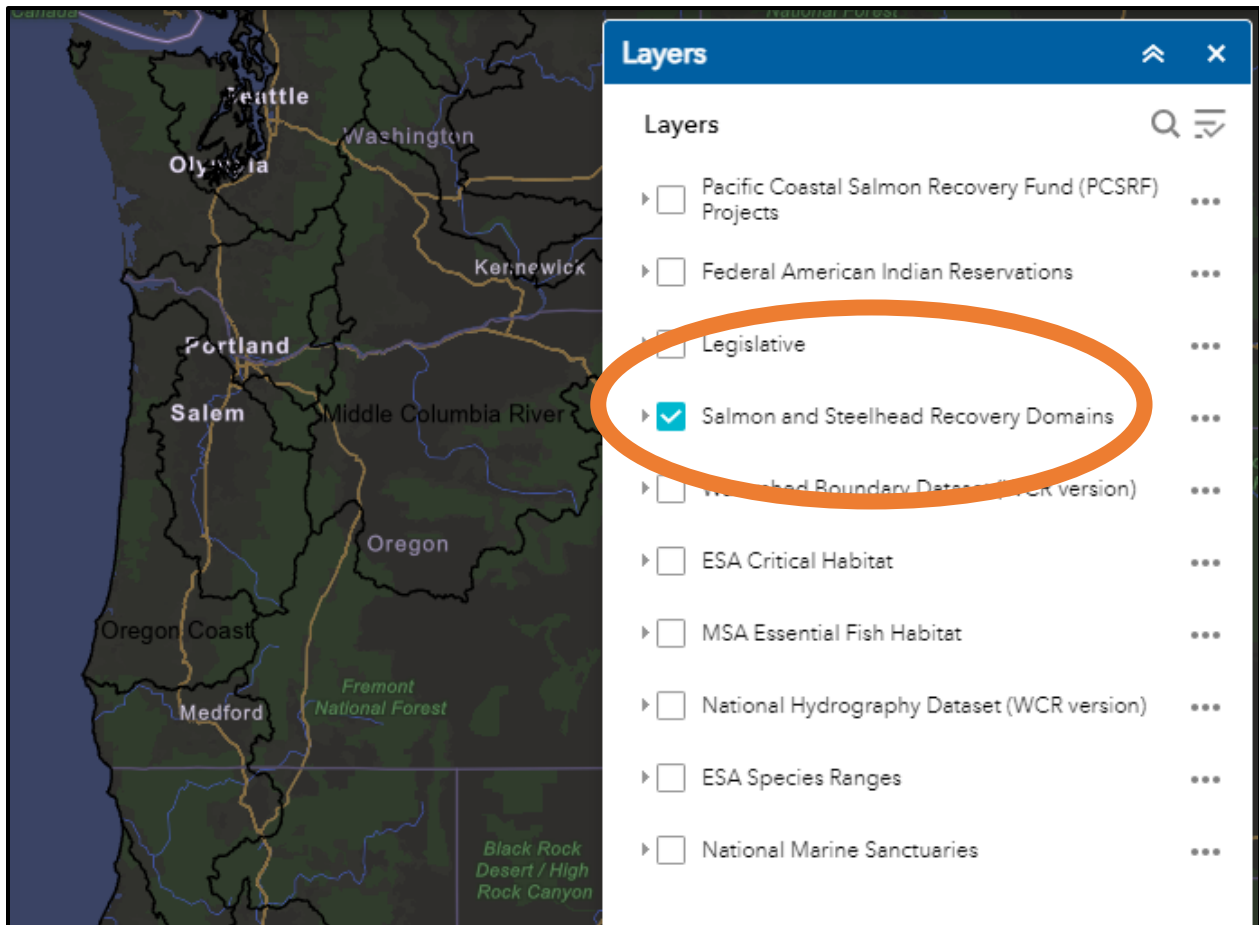
OR EIS website  
<https://www.fema.gov/about/organization/>



## Step 2

On the layers window on the right side of the screen, check Salmon and Steelhead Recovery Domains, and uncheck any other layers that might be checked. This is indicated by the orange oval in Figure 3.

Figure 3. Layers Window

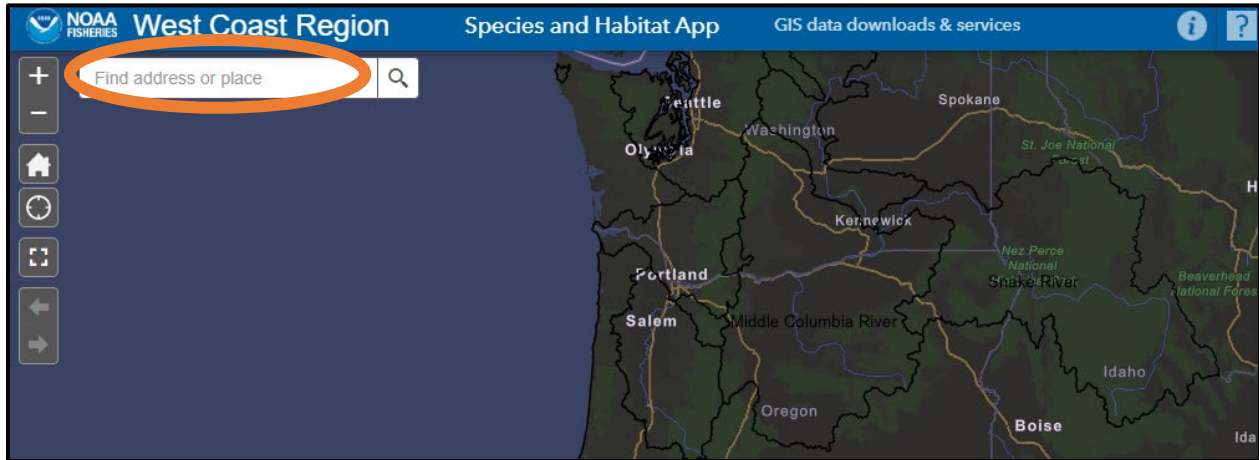


NFIP-ESA Integration in Oregon  
Determining if a Location is Within the Plan Area  
July 2024

Step 3

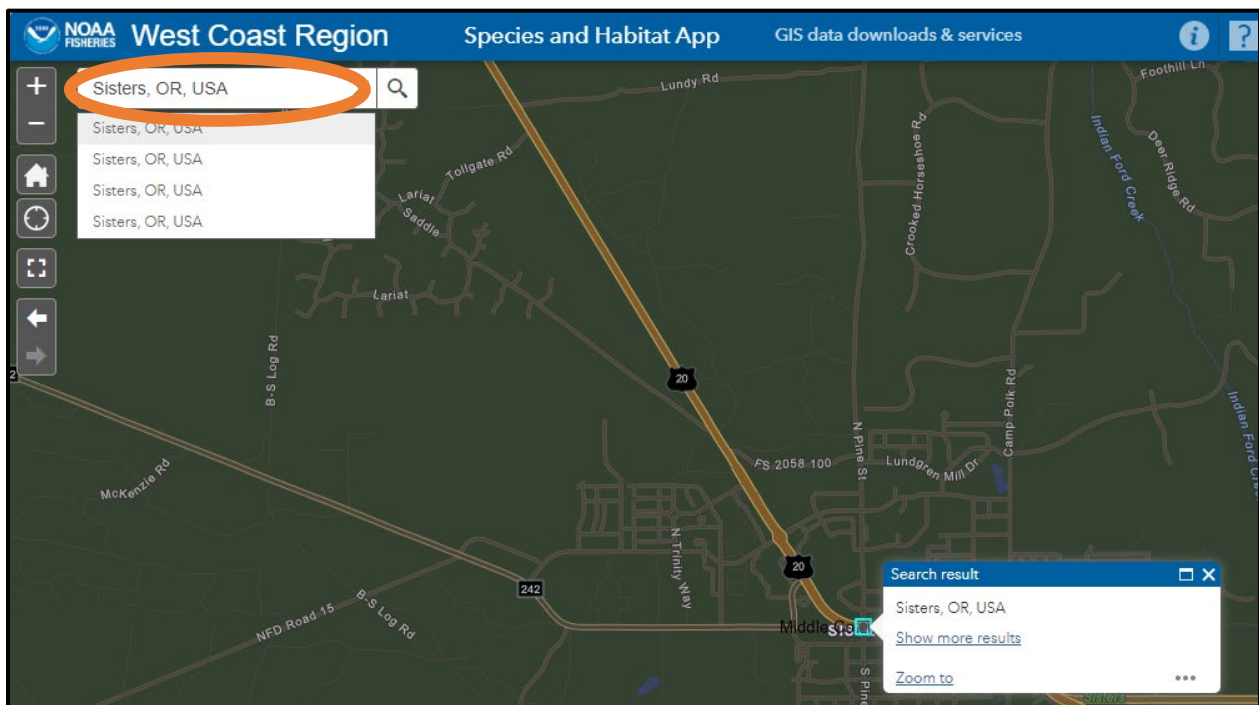
Enter the location of interest in the “Find address or place” search bar, indicated by the orange oval in Figure 4.

Figure 4. Blank Search Bar



Sisters, OR is shown as an example in Figure 5.

Figure 5. Sisters, OR in Search Bar



FEMA



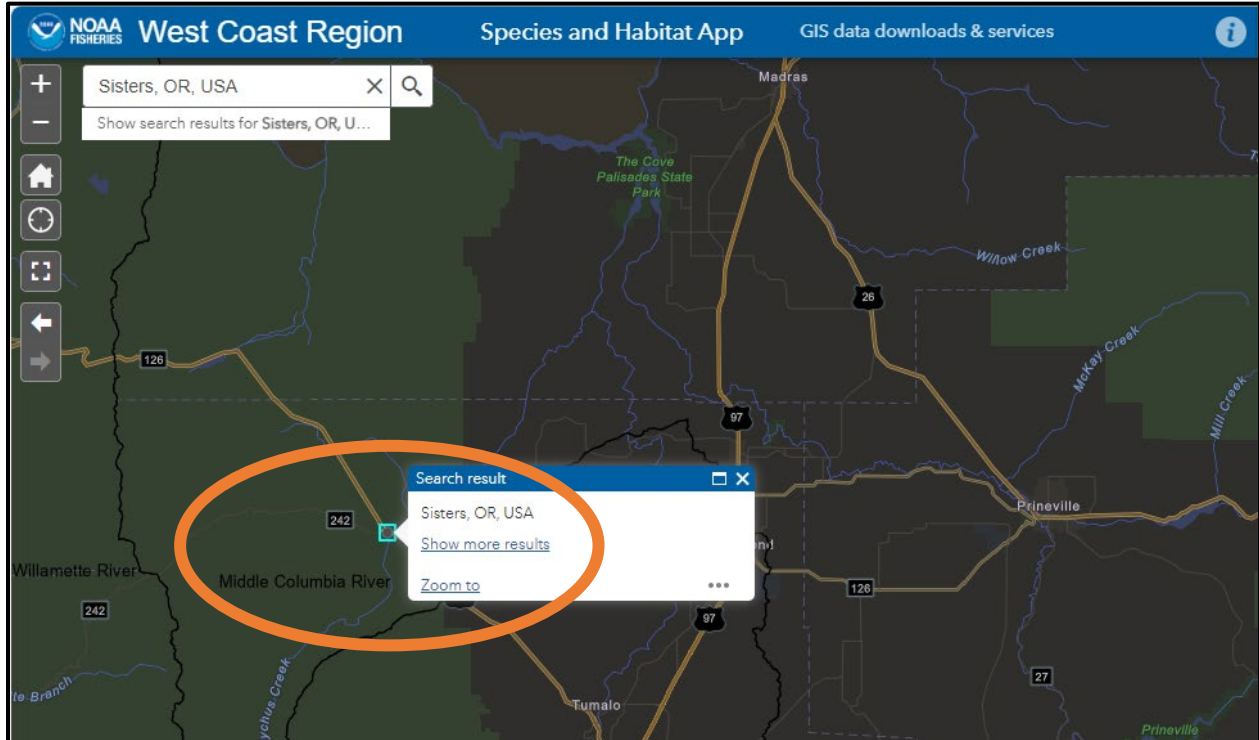
OR EIS website  
<https://www.fema.gov/about/organization/>



#### Step 4

Using the minus button or the scroll bar, zoom out to see if the location of interest is within the boundary of a Salmon and Steelhead Recovery Domain. The minus button is located in the upper left corner of the screen. Figure 6 shows that Sisters, OR is within the Middle Columbia River Recovery Domain, as indicated by the orange oval.

Figure 6. Sisters, OR, Middle Columbia River Recovery Domain

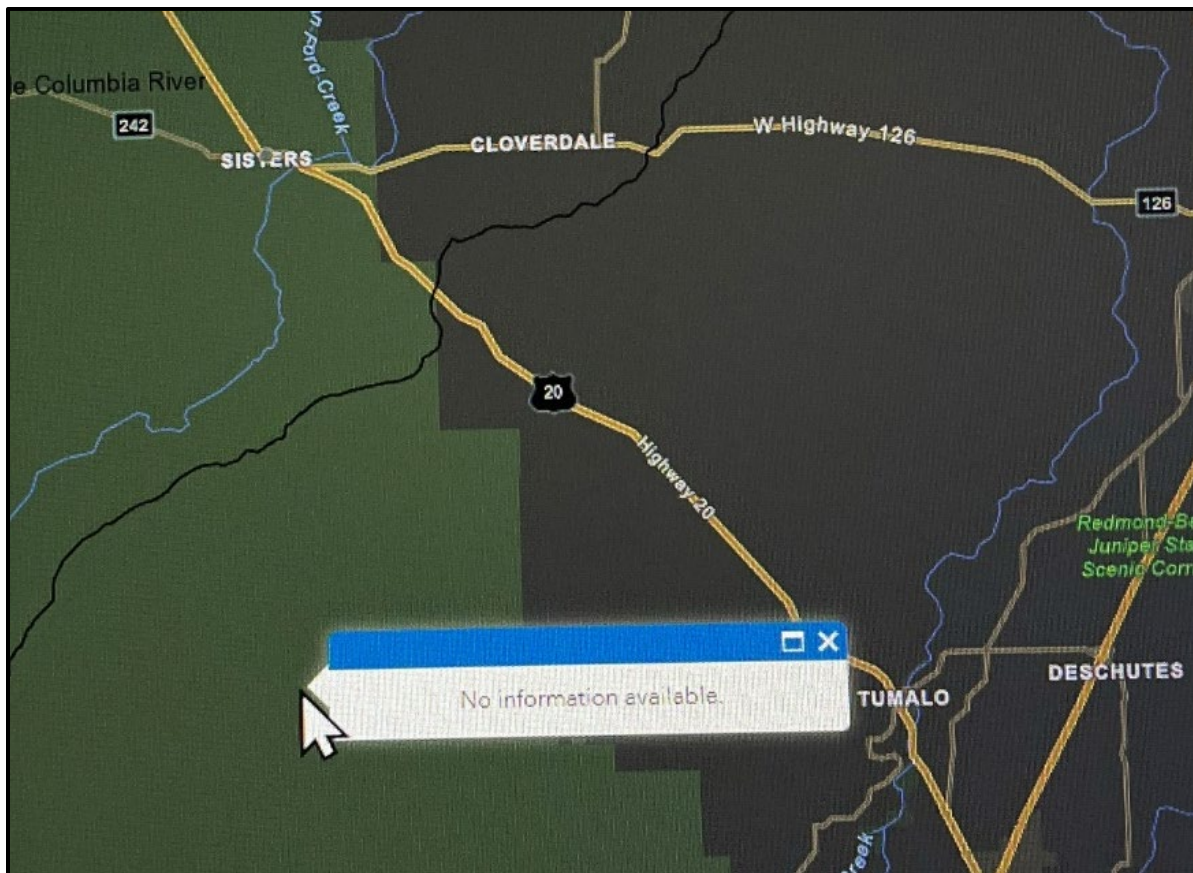


### Step 5

If it is still difficult to tell if your location of interest is located within a Salmon and Steelhead Recovery Domain, you can confirm by clicking on the screen at your location of interest. When you click the screen, an information box will pop up. The information box will either identify the recovery domain or it will say "no information" which indicates the location is outside of the recovery domains.

Figure 7 shows that the location south of Sisters and west of Tumalo is not located within a recovery domain.

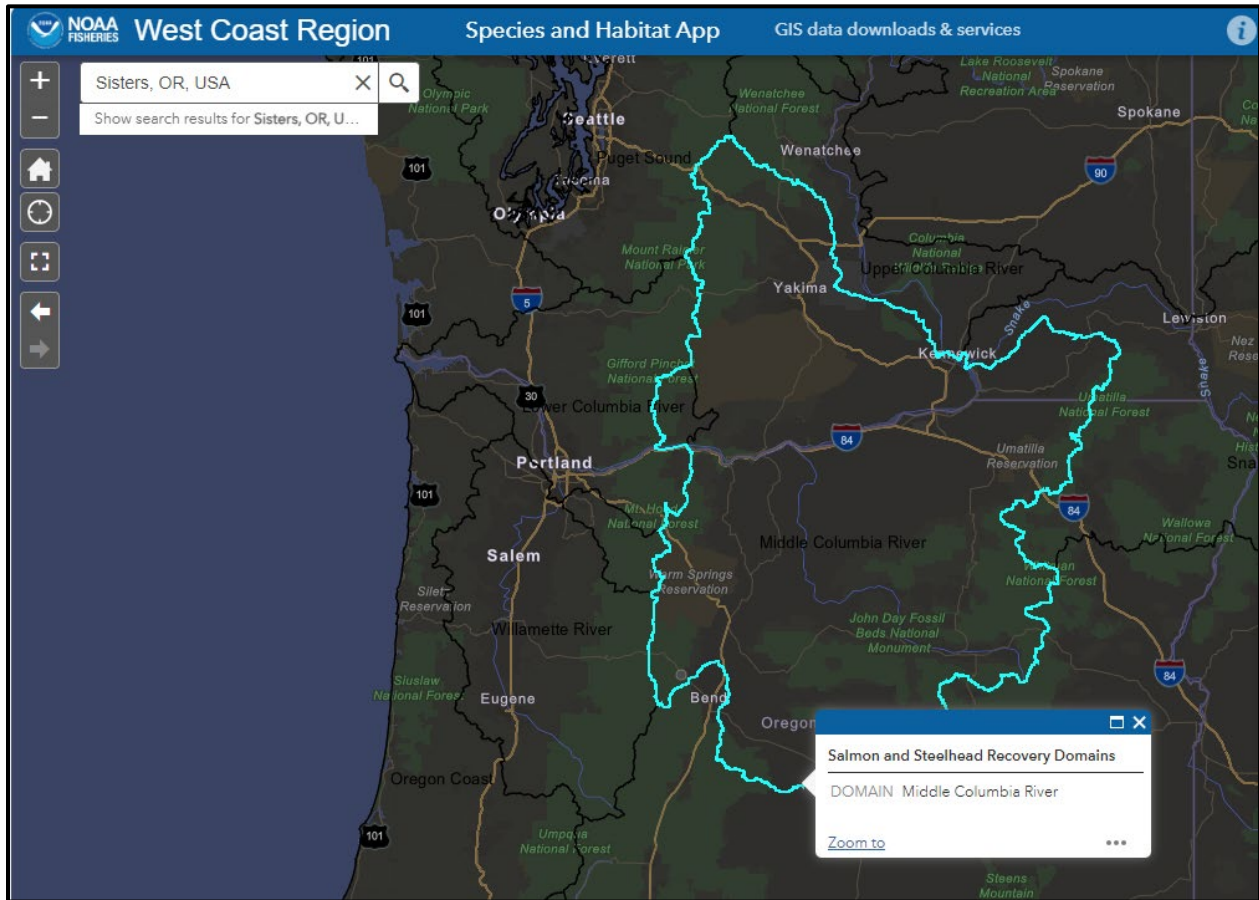
Figure 7. Location with No Information Available



NFIP-ESA Integration in Oregon  
Determining if a Location is Within the Plan Area  
July 2024

Figure 8 shows that Sisters, OR is located in the Middle Columbia River Recovery Domain, identified with a blue-green outline. Because Sisters, OR is located in a recovery domain, it is also located in the plan area.

Figure 8. Information Box Identifying Recovery Domain for Sisters, OR



FEMA



OR EIS website  
<https://www.fema.gov/about/organization/>

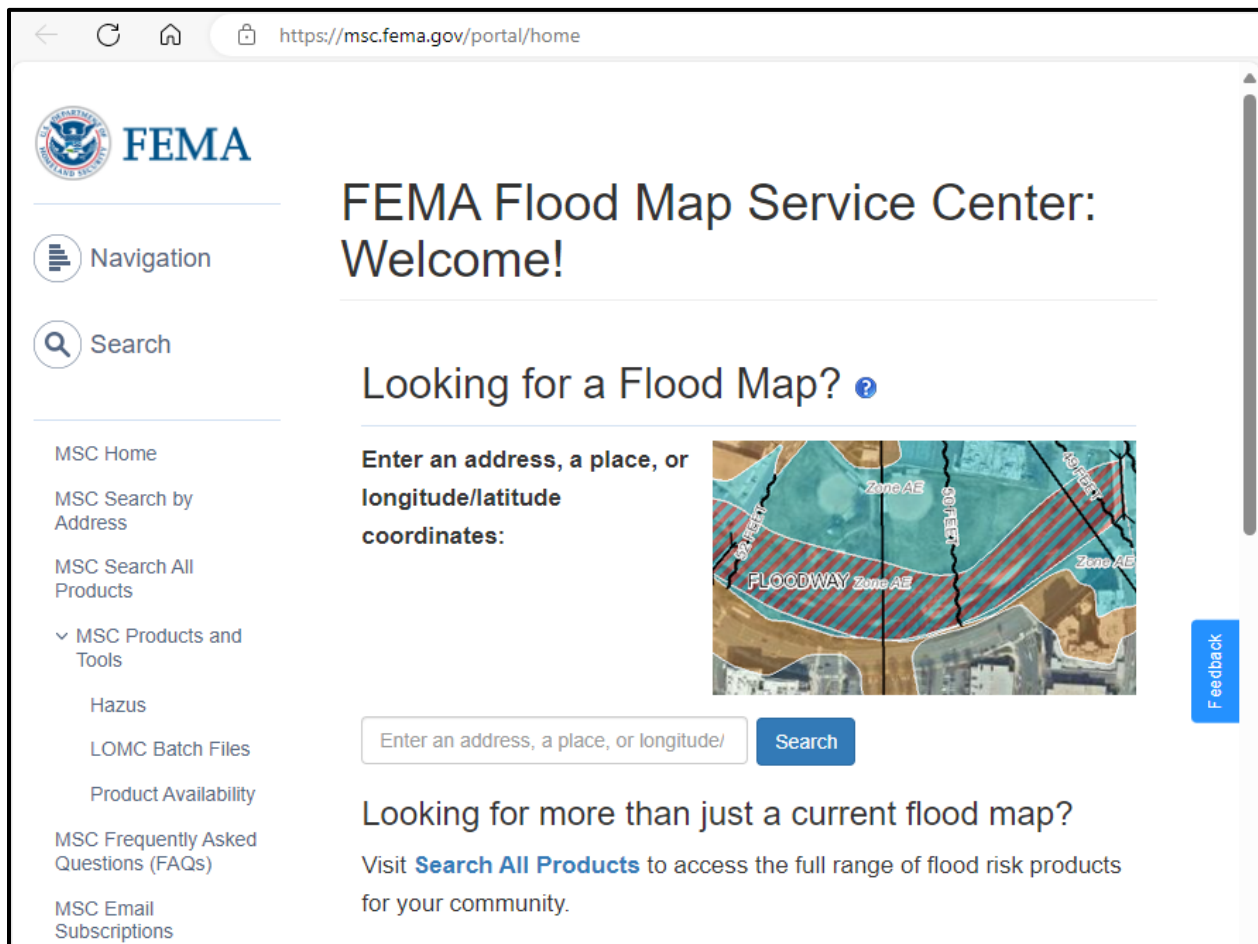


## Directions to Determine if a Location is in the Special Flood Hazard Area

### Step 1

To determine if a location of interest is in the current effective SFHA, access the FEMA Flood Map Service Center at [FEMA Flood Map Service Center](https://msc.fema.gov/portal/home) or <https://msc.fema.gov/portal/home>, as shown in Figure 9.

Figure 9. FEMA Flood Map Service Center



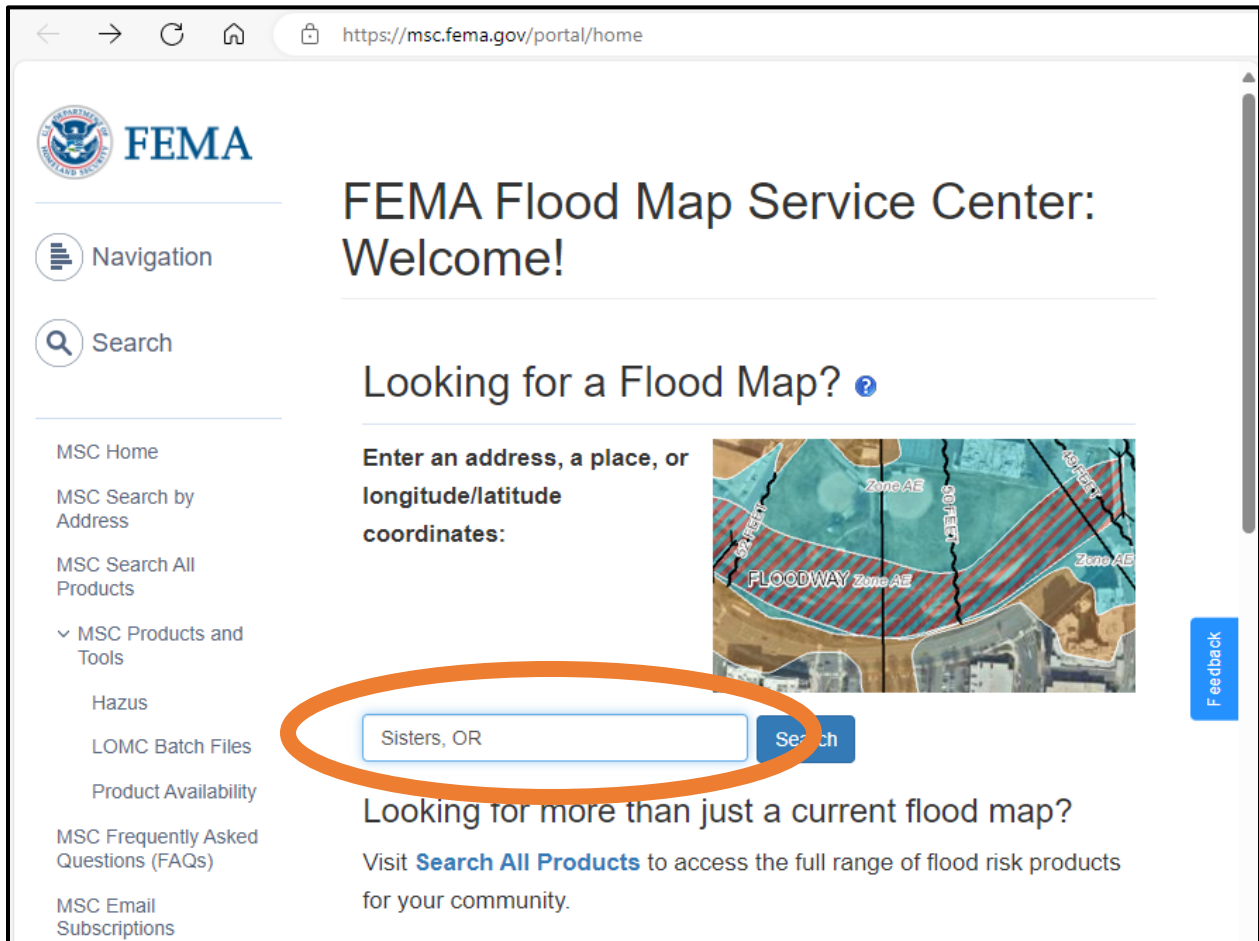
The screenshot shows the FEMA Flood Map Service Center (MSC) home page. The browser address bar displays <https://msc.fema.gov/portal/home>. The page features the FEMA logo and a navigation menu on the left with options: Navigation, Search, MSC Home, MSC Search by Address, MSC Search All Products, MSC Products and Tools (including Hazus, LOMC Batch Files, and Product Availability), MSC Frequently Asked Questions (FAQs), and MSC Email Subscriptions. The main content area is titled "FEMA Flood Map Service Center: Welcome!" and includes a search prompt "Looking for a Flood Map?" with a help icon. Below this is a search input field with the placeholder text "Enter an address, a place, or longitude/latitude coordinates:" and a "Search" button. To the right of the input field is a small map showing flood zones, including "Zone AE" and "FLOODWAY Zone AE". A "Feedback" button is located on the right side of the page.



## Step 2

Enter the location of interest in the Looking for a Flood Map? search bar indicated in an orange oval below. Click search. Sisters, OR is used as an example in Figure 10.

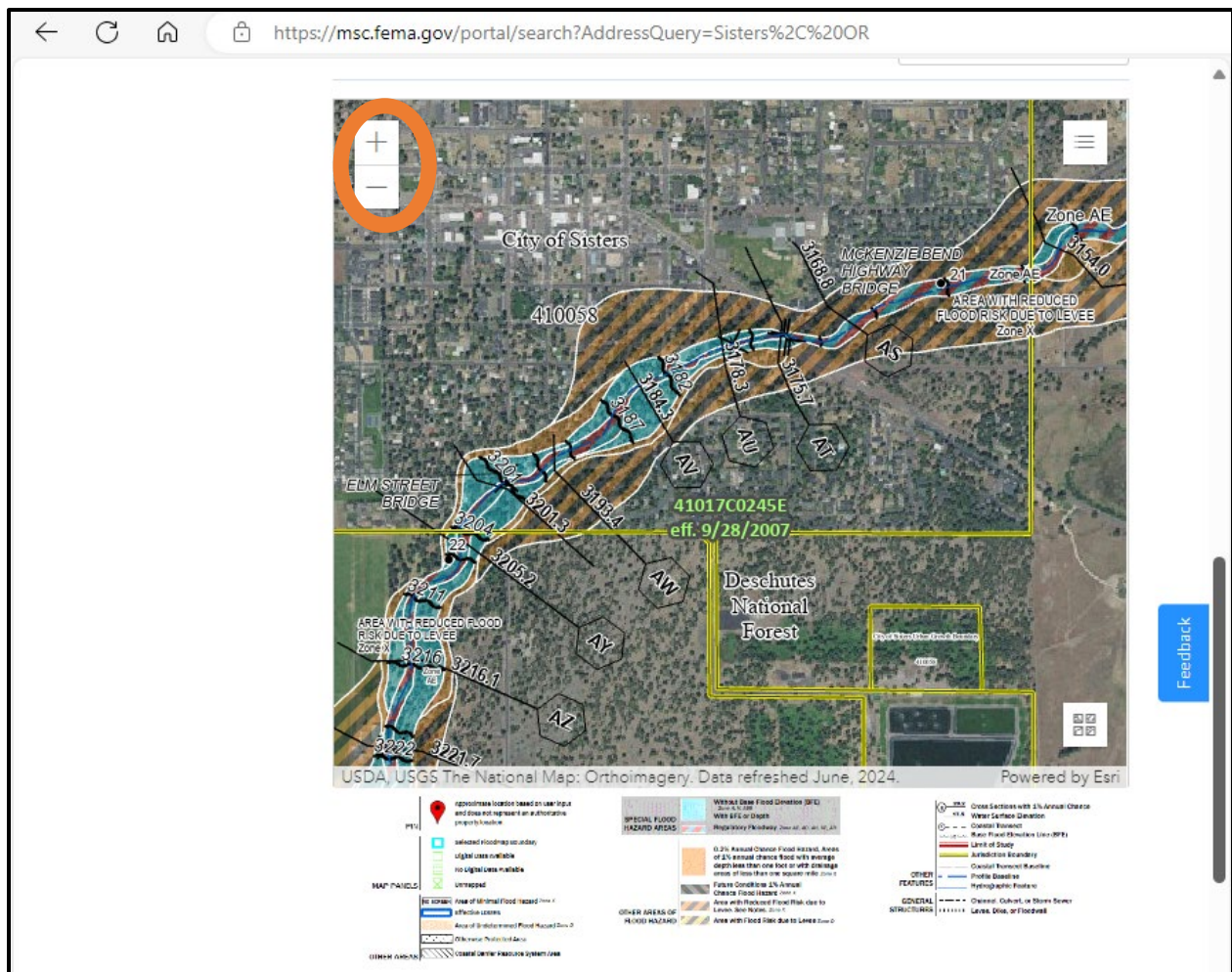
Figure 10. Looking for a Flood Map? Search Bar



### Step 3

Scroll down on the page until you see the map with your location identified. Using the plus or minus buttons at the upper left portion of the map, zoom in or out as needed. The plus and minus buttons are indicated in an orange oval in Figure 11.

Figure 11. Zooming In or Out on the Location Map



### Step 4

Compare your location of interest to the legend below the map. The SFHA is indicated as either a light blue area, or a red and blue hashed area. If your location is within the light blue or red and blue hashed area, it is located within the SFHA. Figure 12 shows the legend. SFHA zones are shaded in grey in the legend.



FEMA



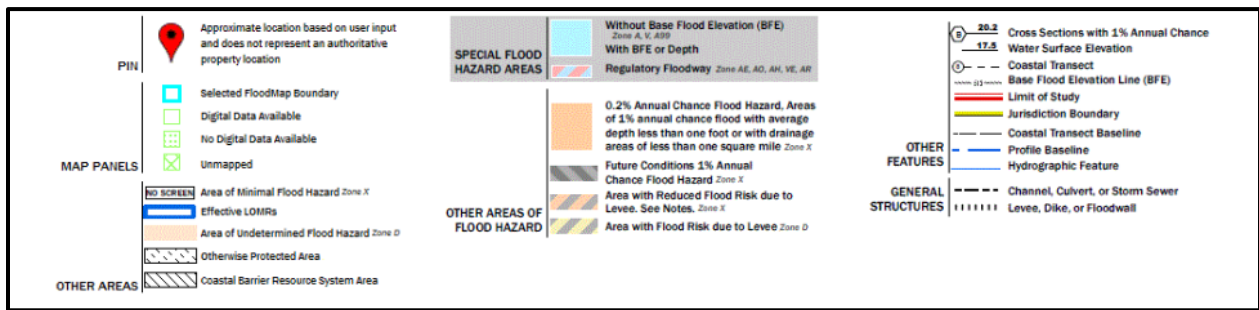
OR EIS website

<https://www.fema.gov/about/organization/>



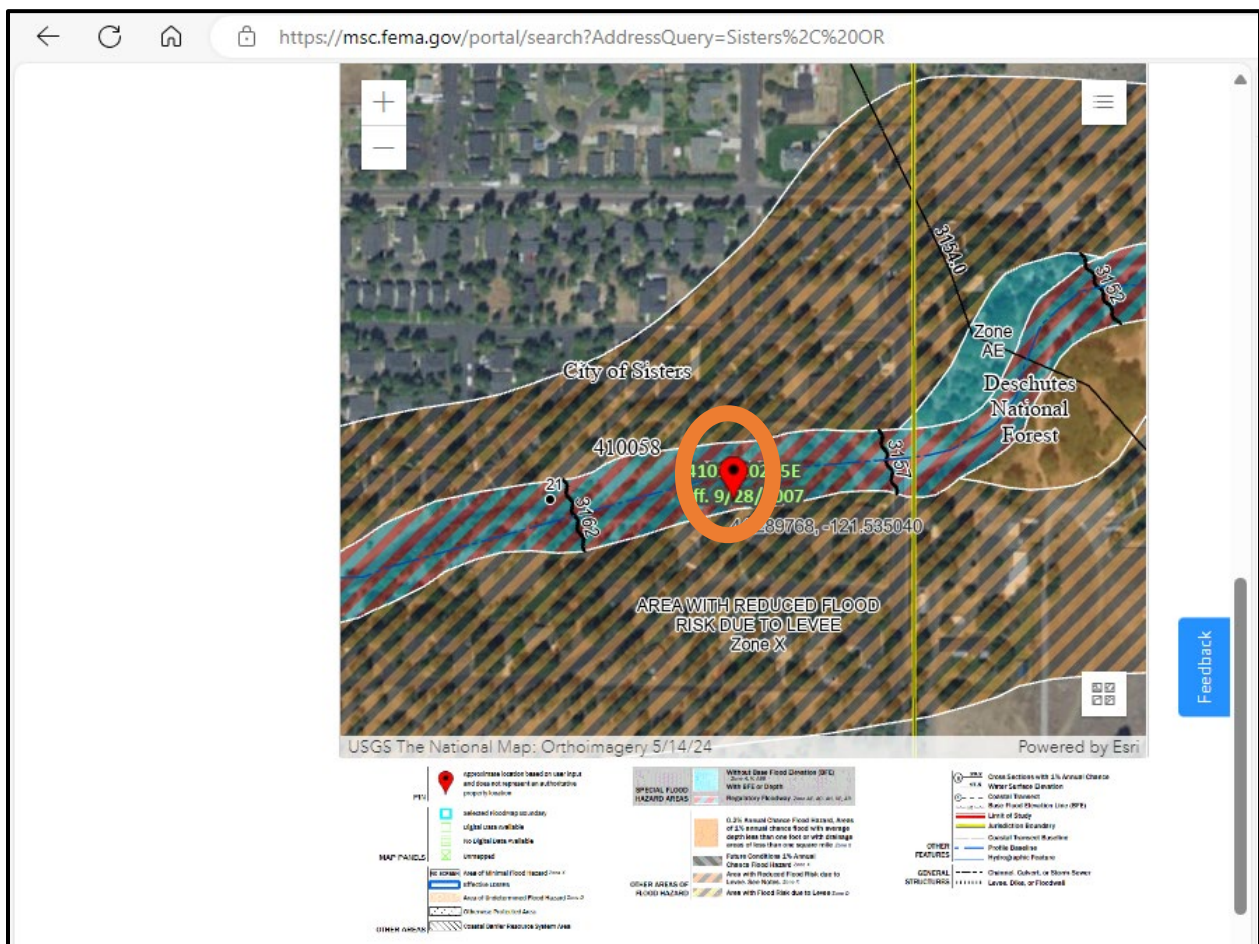
NFIP-ESA Integration in Oregon  
 Determining if a Location is Within the Plan Area  
 July 2024

Figure 12. Special Flood Hazard Area Indicated in Legend



The Sisters, OR example location is depicted in Figure 13. The location indicated by the orange oval is within the red and blue hashed area, which means that it is within the SFHA.

Figure 13. Sisters, OR Example Location in the Special Flood Hazard Area



FEMA



OR EIS website  
<https://www.fema.gov/about/organization/>



## Directions to Determine if a Location is Within a National Flood Insurance Program Participating Community

To determine if a location of interest is within an NFIP participating community, access the FEMA [Community Status Book Report](https://www.fema.gov/cis/OR.html) at <https://www.fema.gov/cis/OR.html>. If your community is listed in the community status book report, it is a NFIP participating community. If you have any additional questions about NFIP participation, reach out to your local floodplain administrator.

### Summary

The Oregon NFIP-ESA integration performance standards apply to communities that are (1) located in the Oregon plan area, (2) located within the mapped special flood hazard area (SFHA), and (3) located within a community participating in the NFIP. These directions help to determine if a location of interest is within the plan area, within the SFHA, and within a NFIP participating community. If all three of these considerations are true for your location of interest, the Oregon NFIP-ESA integration performance standards are applicable. If one or more of the three considerations is not true for your location of interest, the Oregon NFIP-ESA integration performance standards do not apply.



FEMA



OR EIS website

<https://www.fema.gov/about/organization/>

