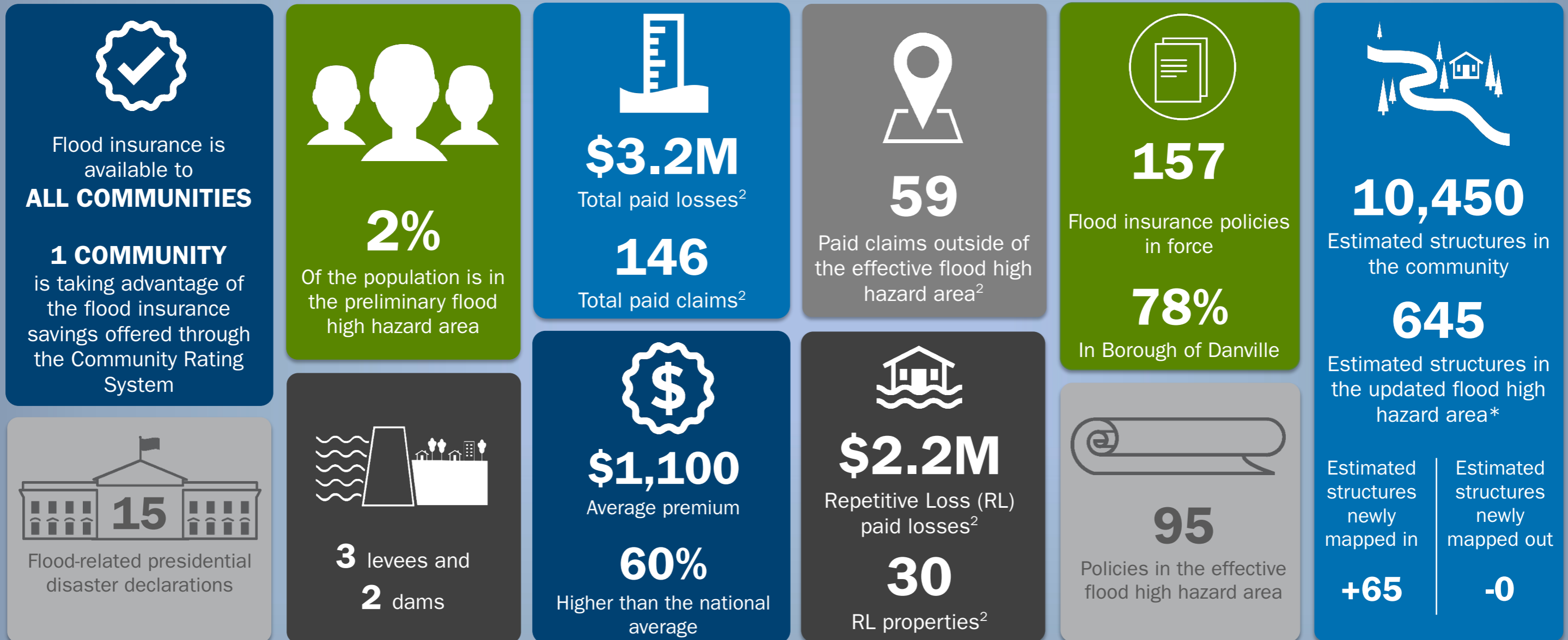


# Montour, PA – Countywide

FEMA's Risk Mapping, Assessment, and Planning (Risk MAP) Program helps strengthen communities by identifying actions they can take now to reduce their hazard risk, enhance local planning, improve outreach through risk communications, and increase local resilience to natural hazards. Below is an overview of some key items identified during the Changes Since Last FIRM<sup>1</sup> impact assessment. **The information presented below are estimates as of June 2020.**

\* The updated flood high hazard area refers to the preliminary 1%-annual-chance floodplain inside the study area, and the effective 1%-annual-chance floodplain outside the study area.



## KEEPING COMMUNITIES INFORMED: Your Risk MAP Timeline

